

SISTER MIDNIGHT COMMUNITY VENUES LIMITED SHARE OFFER



INTRODUCTION

FROM THE SISTER MIDNIGHT FOUNDERS

Welcome to our community share offer. We are offering the chance to invest in our proposal to bring the Ravensbourne Arms pub in Lewisham into community ownership, transforming it into a not-for-profit grassroots live music pub.

Sister Midnight's mission is to create an accessible, affordable and inclusive grassroots music venue and community pub, where people can come together and enjoy the best of South East London's diverse and cutting edge music culture. We want to carry on the legacy of our previous space in Deptford and continue showcasing the wealth of musical talent that Lewisham has to offer. The challenges faced by grassroots music venues, most notably the recent COVID-19 pandemic, have made it clear as day - if we want to make sure that there will still be places to experience live music, then the communities that use these venues need to have ownership of them. That's why we're asking our community to invest in Sister Midnight, and help us create Lewisham's first community owned live music pub.

It's time to protect our music venues, so let's work together as a community to save the Ravensbourne Arms, and create a truly grassroots space where we put local music and local people at the heart of what we do.

**- Lenny, Sophie and Verity
Founders of Sister Midnight**



OFFER SUMMARY

Sister Midnight want to bring the Ravensbourne Arms into community ownership, and seek to raise a minimum of £500K in share capital, with the rest of the project costs being raised through grants and loans.

Opening date: 6th September 2021

Closing date: 20th December 2021

The board of the society may choose to extend the period of the share offer by up to 12 weeks if they believe that by doing so they increase the chances of reaching the maximum target.

- Minimum target to be raised: £500,000
- Optimum target to be raised: £800,000
- Maximum target to be raised: £3,000,000
- Minimum share subscription per person: £100
- Maximum share subscription per person: £100,000 or 10% of the total raised, whichever is lower
- Maximum share subscription per organisation (which is not a society): £100,000
- Interest of 3% paid annually from year 2 onwards
- Withdrawal of capital targeted from year 3 onwards

AFFORDABLE SHARES

We are making a limited number of £25 shares available to those on lower incomes to encourage membership from as much of our community as possible. If you would like to be considered for an affordable share, please email us at info@sistermidnight.org

WHAT ARE COMMUNITY SHARES?

Community shares are withdrawable shares that cannot be sold, traded or transferred between members, unlike shares in a typical company. All members are entitled to one vote – regardless of how many shares they hold. Members can be paid interest on their shares, and also withdraw their shareholding, along with any interest accrued. This is subject to the approval of the board.

COMMUNITY SHARES ARE AT RISK

There is a risk that you could lose some or all of the money you subscribe. You have no right to compensation from the Financial Services Compensation Scheme, nor any right of complaint to the Financial Ombudsman Service. Please ensure that you understand the risks associated with investment and don't invest any money you can't afford to lose.

The Community Shares Standard Mark is awarded by the Community Shares Unit to offers that meet national standards of good practice.

For more information about community shares, the Community Shares Standard Mark and the Community Shares Unit go to communityshares.org.uk



Sister Midnight is the trading name of Sister Midnight Community Venues Limited, a Community Benefit Society incorporated under the Co-operative and Community Benefit Societies Act and registered with the Financial Conduct Authority (registration number 8598). The registered address of the society is 4 Tanners Hill, Deptford, London, SE8 4PJ. By subscribing for shares issued by the society in this share offer you will become a Member of the organisation, thus, an owner of the society and its assets alongside other Members. For more information visit our website: www.sistermidnight.org

OUR VISION

We want to transform the Ravensbourne Arms into a thriving community live music pub; serving locally produced ales and a classic Sunday lunch, as well as delivering a diverse and cutting-edge live music programme. Building upon Sister Midnight's legacy, we'll continue to provide a vital platform for emerging talent, championing the trailblazing local music scenes that have cemented Lewisham's cultural status in recent years.

The Ravensbourne Arms will be more than just a live music pub. We'll make it a true community hub, working to further social good and positive change in the wider community, guided by our core organisational values of accessibility, affordability, ethics, fair pay, inclusivity, ownership, and sustainability.

With Lewisham having been designated "London Borough of Culture 2022", there has never been a better time to create a space for Lewisham's music culture to thrive and grow, and bring our community together in celebration of the incredible creative talent that our borough is home to.



BUILDING BACK BETTER = BACKING BUYING BUILDINGS

The COVID-19 pandemic, and the long closure of music venues, has reminded everyone of the important role live music plays in our collective culture. Small grassroots venues that support emerging artists are essential to the wider live music industry, acting as a seedbed for talent. The impact of COVID-19 is the latest in a long list of the challenges faced by venues, with 40% having closed in the UK between 2006-2016.

The loss of Sister Midnight's Deptford venue during the pandemic has made it clear as day; if we want to keep delivering great live music safely and sustainably, we need to find a new space - one that we own as a community. We want to ensure that the future of our venue is in our hands, not in the hands of landlords whose only commitment is to the rent they get paid.

ABOUT US

Sister Midnight was established in 2018 as a grassroots music venue, record shop and cafe based in Deptford, South East London, providing a vital platform for emerging musical talent, and a place where people from all walks of life could come together in celebration of South East London's music culture. We quickly became an important part of our thriving local music scene, attracting a diverse array of acts and regularly selling out shows. Unfortunately,

THE RAVENSBOURNE ARMS

Located just south of the bustling Lewisham Centre, the Ravensbourne Arms is a detached public house built in 1934, although there has been a public house on this site since the 1750's. It's one of just twelve locally listed pubs in the borough, noted for having architectural and historical importance. Originally known as the Coach and Horses, it was renamed the Ravensbourne Arms in 2012, after the Ravensbourne river which flows through Lewisham. The pub closed in 2016 after it was sold to private property developers who intended to convert the site for residential use. Although the upper two floors of the building have been converted into seven flats, Lewisham Council have declined to grant planning permission for a change of use, citing the community importance of the pub as a factor in this decision.

the challenges presented by the COVID-19 pandemic forced us to leave our space in Deptford, in search of a new home. Grassroots music venues are more likely to succeed when they are owned by the communities they exist in. This is why we want to create Lewisham's first community owned live music pub, and create a culturally important space that will be sustainable long-term.

We want to buy the freehold of the pub, including the newly renovated flats above, bringing it into community ownership and preserving an important community asset for future generations.



COMMUNITY SHARES

This is a community share offer, which is a much snappier name for what they are legally-speaking: 'withdrawable shares in a community benefit society'.

When you invest in community shares in Sister Midnight, you'll become a member of our society with voting rights. Community shares work a lot like a bank account. We pay interest on your investment, which we plan to be 3% per year starting in year 2. We will pay the interest to you in the form of vouchers to be used at the pub (however if this doesn't work for you, you will have the option to talk to us about an alternative method for receiving your interest). Unlike shares in companies, you won't get a dividend nor are you able to sell your shares to someone else.

You can get back the money you invest by withdrawing it from the society. However, the society can only give it back to you if we're doing well as a business (we have to have sufficient trading surpluses and ready cash to enable giving you your investment back in legal terms). The other way to get your money back is through new investor members joining and giving us their money in a separate share issue.

We do plan to open up the share offer to new members but that won't be for a few years after this first share issue. Individuals over the age of 16, charities and other organisations may invest in this offer.

WHAT DO INVESTORS GET?

- 3% interest on share capital, which we hope to pay from year 2 onwards
- A vote at our AGM, and on important issues facing the society
- The chance to stand for and be elected to the Board of the society
- The chance to get their money returned on a first-come-first-served basis if share capital is available for withdrawal from year 3 onwards
- Expected 30% Tax Relief on your investment

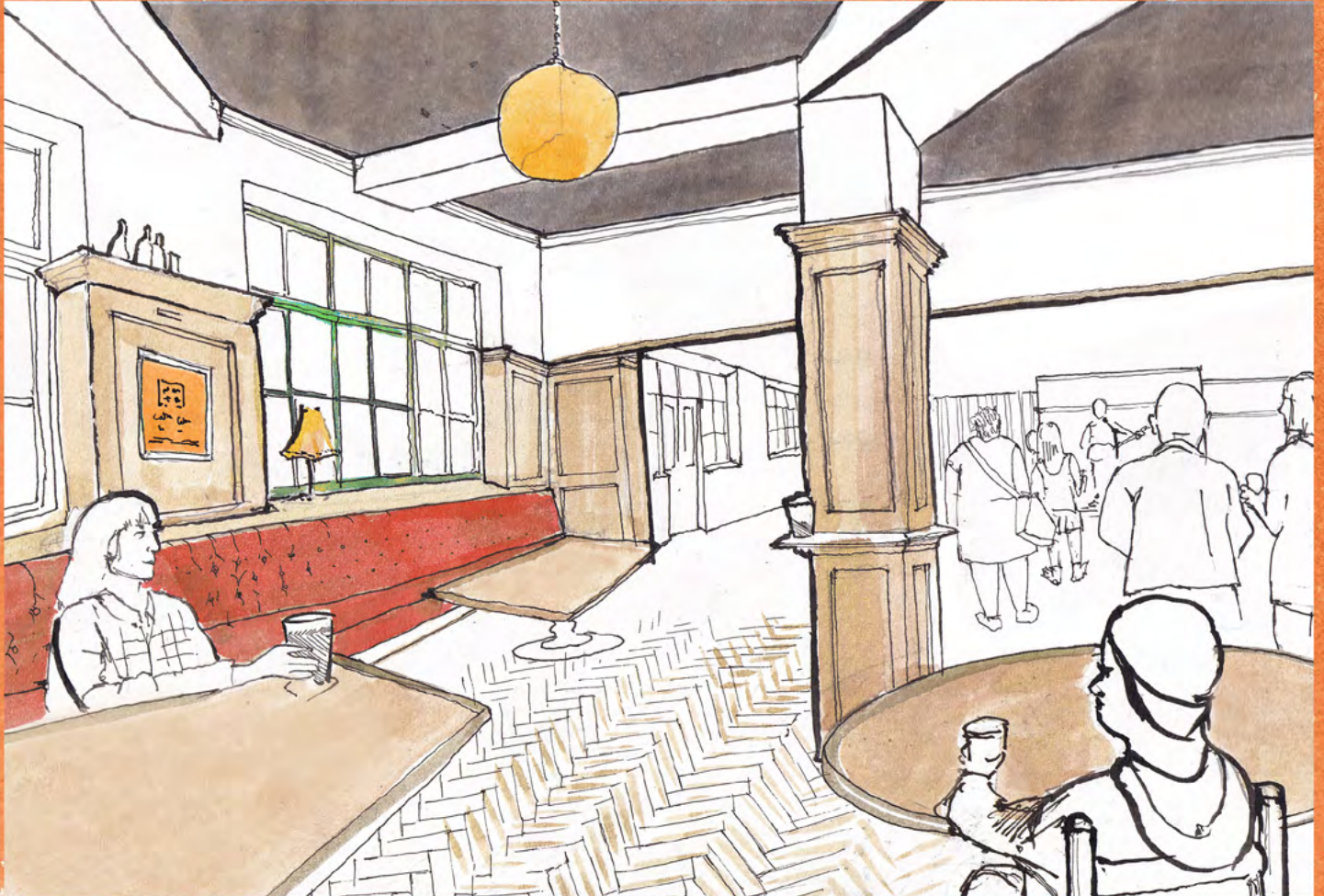
We've also got an incredible line up of rewards for our investors, including gig tickets, signed vinyl, beekeeping experiences and more! These rewards are available on our Crowdfunder page.

TAX RELIEF

We expect this investment to be eligible for Social Investment Tax Relief, which will enable investors to claim 30% of the value of what they invest back against their tax return (provided they are personally eligible). So, if you invested £1,000, you'd immediately get £300 knocked off your tax due either this current tax year, or backdated to the last tax year ending in April 2021.

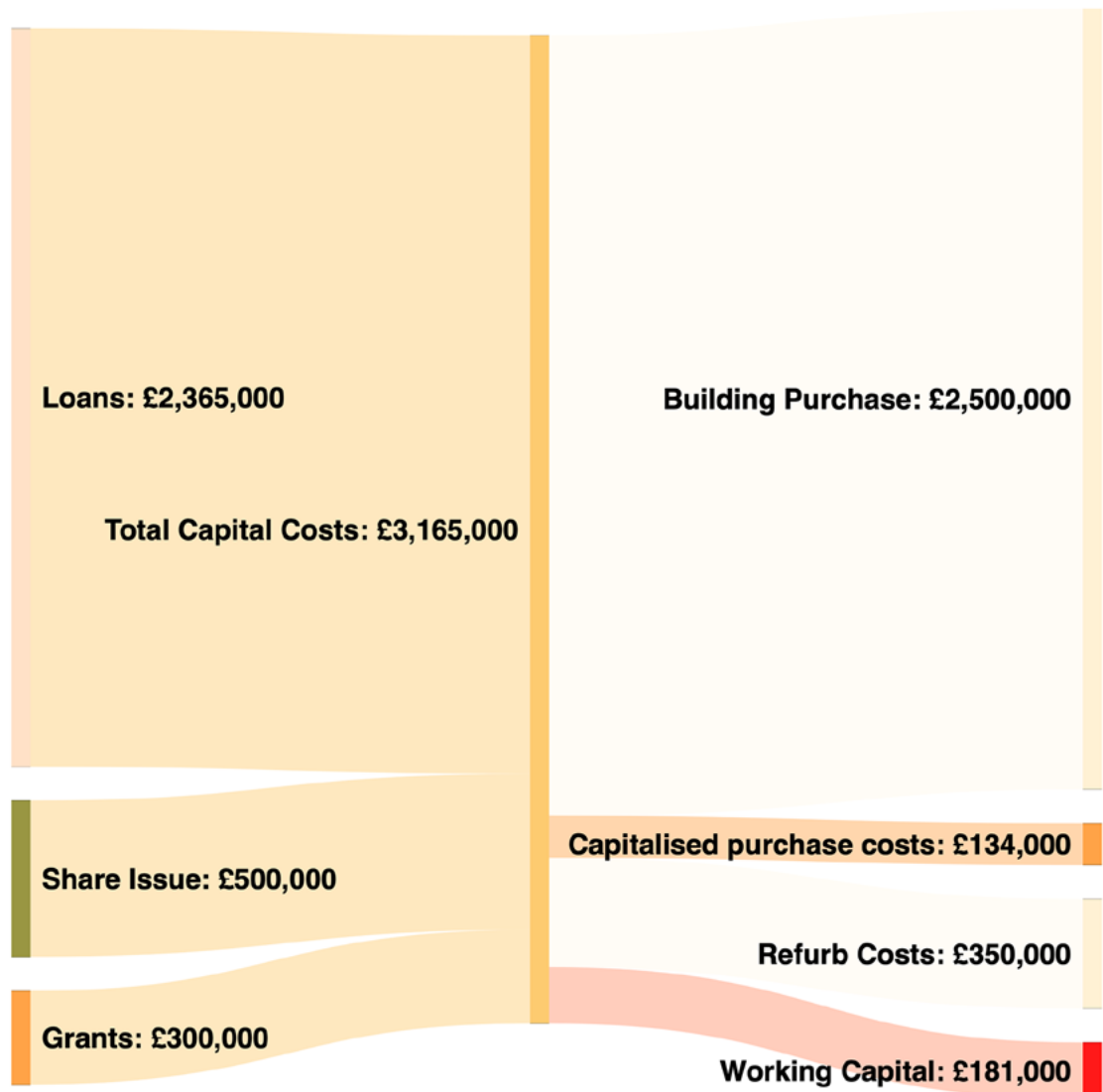
Ordinarily, we'd have applied for 'Advance Assurance' but in order to apply for this, we need to send HMRC our corporation tax number. However, unlike they do with companies, HMRC don't send societies this number when the society is registered, so we've had to write to HMRC requesting it, and we're yet to receive it. As a result, we haven't been able to apply for the tax relief.

Even so, we know that lots of community-owned pubs and venues have run share offers which have been eligible for SITR, and the board believe – on the basis of guidance from our advisors – that investment will be eligible for the relief.



Visualisation Sketch of the Ravensbourne Arms // © Alastair Howard

SOURCES OF CAPITAL



We're applying for £2,364,500 of loan funding from ethical lenders, as well as targeting £300,000 from the government's Community Ownership Fund which was launched in the summer. As a result, we're aiming for a minimum share offer target of £500,000. However, as the grant funding we hope to receive isn't confirmed, our optimal target is £800,000 which means we can do this without it. And, since we'd rather have more money from local members than from a bank, any money we received above £800,000 from grants and loans to a maximum of £3,000,000 would be used to reduce the amount of debt funding we take on. Although the current projected debt financing makes up just under 75% of the overall capital requirements, our financial modelling shows that there will be sufficient profits to cover monthly repayments and maintain the commercial viability of the business. A summary of our financial projections can be found on the next page.

PROFIT & LOSS

	Year 1	Year 2	Year 3	Year 4	Year 5
	£	£	£	£	£
Turnover					
Sales	431,138	601,466	635,050	654,550	668,633
Rental Income	97,900	103,100	105,266	106,133	107,000
	529,038	704,566	740,316	760,683	775,633
Less Cost Of Sales					
Cost of Sales	(184,039)	(258,787)	(275,145)	(284,733)	(291,503)
Rental Voids	(4,440)	(4,440)	(4,440)	(4,440)	(4,440)
	(188,479)	(263,227)	(279,585)	(289,172)	(295,943)
Gross Profit	340,559	441,340	460,731	471,511	479,690
Less Overheads					
Overheads	-233,905	(268,968)	(275,971)	(281,908)	(287,526)
EBITDA	106,653	172,372	184,760	189,603	192,164
Less					
Share Interest	-	(15,000)	(15,000)	(15,000)	(13,875)
Mortgage Interest	(60,758)	(61,558)	(65,918)	(69,916)	(73,542)
Loan Arrangement Fees	(22,152)				
Depreciation	(57,690)	(57,690)	(57,690)	(57,690)	(57,690)
Extra-Ordinary Day one Costs	(14,000)				
Plus					
Revenue Grants	50,000				
Capital Grants Released to the P&L	5,000	5,000	5,000	5,000	5,000
Profit before Tax	7,054	43,124	51,152	51,997	52,057
Less Corporation Tax	-	-	-	(571)	(19,902)
Profit transferred to reserves	7,054	43,124	51,152	51,426	32,155

CASH FLOW

	Year 1	Year 2	Year 3	Year 4	Year 5
	£	£	£	£	£
Operating Cash Flows					
Net Profit	7,054	43,124	51,152	51,997	52,057
Plus					
Depreciation	57,690	57,690	57,690	57,690	57,690
Share Interest	-	15,000	15,000	15,000	13,875
Changes in A/P	27,607	1,844	1,749	(1,340)	685
VAT Charged (Input Tax)	88,048	123,153	130,303	134,377	137,367
Less					
Grant Income	(55,000)	(5,000)	(5,000)	(5,000)	(5,000)
Changes in A/R	(650)	(72)	(72)	(39)	(36)
Changes in Stock Levels	(7,471)	(299)	(179)	(1,024)	(133)
VAT Paid (Output Tax)	(117,575)	(62,276)	(65,621)	(67,641)	(69,028)
VAT paid to HMRC	44,924	(59,874)	(63,568)	(66,222)	(67,938)
CT paid to HMRC	-	-	-	-	(2,677)
Net Operating Cash Flows	44,627	113,290	121,454	117,797	116,861
Investment Cash Flows					
Purchase of Property, Plant, and Equipment	(2,984,500)				
Disposal of Property, Plant, and Equipment					
Net Investment Cash Flows	(2,984,500)	-	-	-	-
Financing Cash Flows					
Grants received	300,000	-	-	-	-
Loans In	2,215,150				
Loans Repaid	(213,756)	(62,973)	(62,475)	(62,260)	(62,328)
Share Capital Invested	500,000	-	-	-	-
Share Interest Paid	-	-	15,000	15,000	15,000
Shares Withdrawn	-	-	-	(37,500)	(37,500)
Net Financing Cash Flows	2,951,394	(62,973)	(77,475)	(114,760)	(114,828)
Net Cash Flows	59,603	57,651	66,624	35,973	38,599
Cash at start of period	-	11,521	61,839	105,817	108,854
Cash at end of period	11,521	61,839	105,817	108,854	110,888
Less Float	(1,000)	(1,042)	(1,083)	(1,108)	(1,125)
Cash Available	10,521	60,797	104,734	107,746	109,763

FAQ'S

We are running this share offer through the Crowdfunder website. Crowdfunder will take payment immediately using a credit or debit card and will hold the funding until the project is either successful and they will pass the money to us, or unsuccessful in which case they will give you your money back.

WHO CAN INVEST?

Anyone over the age of 16 can invest (but only people aged 18 or above can serve as directors).

CAN PEOPLE CLUB TOGETHER TO BUY SHARES?

Yes, but as with organisations, you'll have to nominate a member of your group to be the named shareholder in our share register.

WHAT IS THE MAXIMUM INVESTMENT?

The minimum investment is £100 and the maximum is £100,000 (the legal maximum we can issue to any individual or non-society) or 10% of the total (the recommended maximum for societies by the Community Shares Unit). Any investment over this 10% level will be refunded.

CAN ORGANISATIONS & BUSINESSES BUY COMMUNITY SHARES?

Yes. A representative of that organisation will need to become a member of the society as a nominee for their organisation or business.

CAN I BUY SHARES AS A GIFT FOR SOMEONE ELSE?

Yes! You can buy shares on behalf of someone else over the age of 16, but in order for them to actually become a shareholder, the gift recipient will have to fill out an application form themselves and consent to becoming a member of the society and accepting the rules.

WHAT HAPPENS IF WE CANNOT ACQUIRE THE RAVENSBOURNE ARMS?

We are committed to finding a great location to create Lewisham's first community-owned live music pub. If, for any reason, the sale of the Ravensbourne Arms were to fall through, we would work to quickly find another suitable site in Lewisham and we would consult anyone who has bought shares before proceeding.

CAN I SELL MY SHARES?

No. This investment is in withdrawable share capital which cannot be transferred, sold or given to anyone else, except on your death. You can tell us in advance who you wish to transfer your investment upon your death, and we can transfer the first £5,000 of your investment to them; any investment above £5,000 requires your beneficiary to be explicitly named in your will. If you do not nominate anyone, then the Board will rely on

CAN MY INVESTMENT BE GIFT AIDED?

No, because we aren't a charity.

WHAT IF THE SOCIETY ISN'T FINANCIALLY SUCCESSFUL ENOUGH TO SURVIVE?

If we did become insolvent, the ability of investors to recoup the funds they have invested would depend on firstly the value we (or the appointed insolvency practitioners) could get for the assets of the society and secondly, the value of our debts at that point.

In the event of our insolvency or orderly winding-up, the proceeds from the sale of those assets and our cash would firstly pay off all our creditors, and if there were any funds left at that point, would be used to pay back shareholders as much of their investment as they have outstanding as possible, on a pro-rata basis.

As we are a society with a statutory asset lock should there be any surplus after returning funds to investors this would have to be given to another organisation with similar aims and a similar asset lock. This cannot be changed by members and is enforced by law.

WHAT HAPPENS IF I DON'T GET ALL MY INVESTMENT BACK?

Although we are registered as a society with The Financial Conduct Authority (FCA), the sale of withdrawable shares in the society is not regulated by the FCA.

Like many investments, these community shares are at risk and you could lose some or all of the money you invest. Unlike deposits with high street banks, community shares are not covered by the Financial Services Compensation Scheme, nor is there any right of complaint to the Financial Ombudsman Service. If you are considering investing a significant amount then you may wish to seek independent financial advice before doing so. Investors who have claimed tax relief would also be eligible to claim loss relief against their tax liability for the difference between what they invested less any tax relief already claimed and what was returned to them

WHO WILL RUN US?

The three Founders of Sister Midnight - Lenny, Sophie and Verity - are permanent directors of the society who serve until they're removed, expelled or resign. They will be joined by other people they add to strengthen the team. All of those additional Directors will resign at the first AGM of the society, due to be held by March 2023 to enable a new board to be elected with the confidence and legitimacy of being democratically elected by our members. Any member can be elected, and all members have one vote. Crucially, that new board must elect at least one more person than there are remaining Founders.

HOW WILL WE OPERATE?

Our board will appoint the general manager, who will be responsible for the day-to-day running of the pub, and appoint additional staff members. The Board of Directors will follow a policy governance model, acting in an advisory capacity to support the general manager in meeting the overarching operational goals of the pub. This is a model that has been pioneered in the US and is used successfully in community retail outlets from shops to brewpubs. In order to successfully govern the society, the board develop and monitor 2 key policies: identifying what the 'point' of the society is - what change are we trying to make in the next 12 months given our available resources, and secondly, stipulating what the staff team can't do to achieve those outcomes; everything else not on that list is acceptable, and the Board get out of the way in letting the staff get on with making a success of the venue (these policies are currently under development).

THE SISTER MIDNIGHT STEERING GROUP

Our group is comprised of our founding members and steering group volunteers; people who are engaged with the communities we exist in and who have the skills needed to successfully govern the society.

Lenny Watson



I founded Sister Midnight in 2018, driven by my long standing love for grassroots live music and the people and venues that contribute to it. I have experience in building a business from the ground up, and all the work that entails; be it DIY construction, accounting, live music programming or pouring pints. Having worked in music venues, record shops, events management and pubs, I've become increasingly concerned for the future of grassroots music in the UK, particularly in London. My determination to protect these crucial spaces has led me to believe that community ownership presents the most viable option for the survival of venue spaces, which is why I decided to convert Sister Midnight to a community benefit society, and work towards establishing Lewisham's first ever community owned live music pub.

Sophie Farrell



I have been immersed in the music scene of south London since attending the BRIT School in Croydon and then subsequently at Goldsmiths University in Lewisham where I founded Social Records Society, a community vinyl collective that hosted events at Sister Midnight Records as well as numerous venues across South East London. As a freelance videographer and editor working specifically in documentary film, I believe that the arts sector should be protected at all costs along with the environments that nourish them. We must fight to save cultural, creative and community spaces due to the abundance of value that they can socially provide.

Verity Hobbs



Born in Camberwell in the late 90s, I remember watching gigs at the Crystal Palace Bowl with my family, soaking up live music without realising it's impact on me. I founded Social Records Society in 2019 - a project which initiated the collaboration of local artists and grassroots music venues. Sister Midnight Community Venues stands as a not-for-profit cousin to this concept; saving the Ravensbourne Arms through community ownership, to foster and support local musical creativity.

Sam Dabb



I have been working in and managing Newport venue Le Pub for 22 years. Under my guardianship it became a top venue on the UK touring circuit and has been nominated for many awards including NME Small Venue Of The Year, in which it finished third overall and first in Wales. In 2016, when faced with closure due to the sale of the building I set up a community benefit society and launched a community share offer, enabling Le Pub to move to much bigger premises and become a multi use artspace as well as a venue. I am also the Welsh Co-ordinator for the Music Venues Trust, and have been part of the #SaveOurVenues campaign during the pandemic.

Lionel Openshaw



I am an elected local councillor for the London Borough of Lewisham. I have lived in Lewisham for 30 years and my daughter attends a local primary school. I'm a graduate of Goldsmiths; and hold an MA from UAL. I have participated in various arts events – as a designer, artist, performer and promoter. I served as Chair of SE London Community Access Theatre; and was Co-Director of Bombay Mix, a British-Asian arts organisation. I am a member of the Board of Trustees for The Albany theatre in Deptford; and also works full-time for the UCL Social Research Institute.

Claire Pritchard



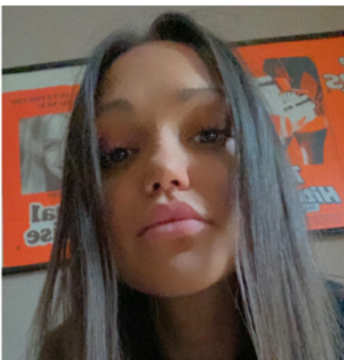
Joining Greenwich Co-operative Development Agency in 2002, I am now the CEO and have grown their work to include public health programmes, training, sustainable food cities partnerships, managing community buildings, food growing, restaurants, production kitchens, cookery clubs, wholesale fruit and vegetable, street trading, new markets and ready meals. In 2016 I became a trustee of borough Market and have been on the London Food Board since its beginning in 2005, becoming chair in 2018. I have also managed restaurants at the Royal Festival Hall and my own restaurants in Ireland and a pub in Deptford which hosted nightly arts events. I am passionate about protecting pubs for community use and particularly as accessible, local music and arts venues.

Dan Stubbs



In a 20-year music journalism career, I've attended countless gigs, probed the minds of some of the world's greatest music-makers and only once been threatened with a punch in the chops as a result. Ending a long stint at NME as Deputy Editor in 2020, I left on a run of covers including The 1975, Slipknot, Lady Gaga, record audience figures and a major role co-organising the 2020 NME Awards ("the craziest awards show I have ever been to" – Taylor Swift) and am now working in commercial media and on numerous creative projects. A displaced northerner and proud Lewisham resident of six years' standing, I'm beyond thrilled to find like-minded people here creating the fertile soil of grassroots music on home turf (and I'll be lobbying for the return of the bar billiard table, too).

Alex Karol



Previously part of the core press team for the Rolling Stones, I sold my soul to the sexy grit of live music and haven't looked back. I have headed up the PR campaigns for major artists, tours, award shows, and festivals right across Europe, and also, lead the comms campaign for Independent Venue Week each year... As a Lewisham local, the Ravensbourne Arms project is not only close to my home, but very close to my heart.

Toby Evans-Jesra



I'm Toby, I've been living in Lewisham in for the past three years dividing my time between working as a self taught artist and immersing myself in the local music scene by playing in bands, promoting gigs and running a small fundraising label. My interest in music and illustration have always been intertwined and the majority of the art I make is closely linked to music, whether it be for music magazines, record artwork and gig posters. Before the pandemic I used regularly play and volunteer at Sister Midnight's previous Tanner's Hill space, it was such an important spot in the music scene and was truly loved; I am so excited for The Ravensbourne to continue that legacy and provide a safe, accessible space for music, art and community to thrive.

Alastair Howard



I am an architectural designer from Manchester, now living in South London. I'm currently finishing a master's in architecture, alongside my day job at a structural engineering firm. As well as a love for London's nightlife and music scenes, I also have a keen interest in housing politics, both of which drew me to the Ravensbourne Project. I value the social and technical aspects of design, and enjoy reading, writing and DIY attempts at woodwork.

Ryan Holt



When Sister Midnight shared their plans to turn the Ravensbourne Arms back into a pub and live music venue, I immediately knew that I wanted to get involved with the project and felt that my experience in managing hospitality venues as well as a passion for music and the arts would be useful in supporting the core team in making it happen. I spent five years working at Voodoo Ray's a late-night pizza bar where I worked from the opening day as a bar server, growing to General Manager before moving on to open its third venue in Peckham so therefore have experienced managing teams, communicating with customers, suppliers, neighbours and local council, as well as opening a new site and engaging the local community with it.

Henry de Vroome



I'm Henry, a chartered accountant with over fifteen years' professional experience, mainly in the music industry, and I'm currently the financial director at a music venues group. I'm also a lifelong record collector and occasional DJ. I love pubs and pub culture and am concerned about the loss of these unique places in recent times, hence why I was drawn to the project. Originally from West London, I've lived in the borough for the past six years.

Arran Thomas



I'm Arran, a Lewisham resident for 2 years and counting, living just down the road from Ravensbourne Arms. I love going to gigs and as a Deaf person, watching the band and singers is half the music for me. This is part of what I bring to the project, advocacy for accessibility; a desire to make live gigs and their venues more accessible to all, with captioning, braille, wheelchair friendly design and disability aware staff. Before my current career in mental health, I trained in architecture so I will also bring keen attention to detail with the design and restoration process.

Naomi Wright



My name is Naomi, I've lived in south london for 10 years after relocating from the north east. One of the reasons I chose the area is because of the range and diversity of music and arts. I got involved with the project because over the years I've experienced the benefits of pubs that have a sense of family and community to them, and being involved in helping to set up a community pub in fullest sense is really exciting. have a decade of experience in public sector strategy, (things like identifying customer needs, helping organisations develop vision and mission statements, running workshops and working with executive teams and senior decision makers.

We are so grateful for the huge amount of support we have received, without which this project would not have been possible.

Thank you to Music Venues Trust for their inspiring work saving the UK's venues, to Dave Boyle for believing in this project and helping us to make it happen, to Sam Dabb & Le Pub for their help and advice, to Co-ops UK for their support, to Plunkett Foundation, Power to Change and the Boosting Community Business London programme for the grant support they have awarded us, and to every person who has contributed their time and skills to help us create Lewisham's first community owned live music pub.

Lastly, and most importantly, thank you to the community of music lovers and makers that have supported Sister Midnight since day one, we couldn't do this without you.



SISTERMIDNIGHT.ORG



SISTERMIDNIGHTT



SISTERMIDNIGHTLDN



SISTERMIDNIGHTLDN



INFO@SISTERMIDNIGHT.ORG

Sister Midnight Community Venues Ltd is officially registered with the Financial Conduct Authority as a Community Benefit Society under the Co-operative and Community Benefit Societies Acts 2014.

Our FCA register number is: 8598

